



Before starting your install:

- CLEAN** – Ensure the installation area is swept clean of all debris.
- FLAT** – Ensure the sub floor and installation area is level within $\frac{3}{16}$ " over 10ft.
- SOUND** – If installing above grade or above joists, ensure the joists are built to 19" OC to reduce deflection.

By ensuring that these three points are met you will have a better installation experience. Please take your time with installation and reference the installation documents closely or visit taigabuilding.com

Installation Instructions

NinjaXtra floors are designed as a floating system and installed by using a drop lock tap glueless lock system. **NinjaXtra** is intended for indoor use only. For best results, be sure to use tiles or planks out of more than one box. Installation outside of these recommendations are considered experimental and not covered under warranty.

- NinjaXtra** has an attached acoustic pad.
- No other underlayment is necessary.
- Cottage friendly.
- Warrantied for temperatures from -40°C to +40°C.
- Avoid long period of exposure to direct sunlight, which can fade the floor over time.

This product can be **glued down with a flooring adhesive** if any of these excessive conditions exist in your home: uneven floor surfaces, large windows, large temperature changes, heavy traffic, stairs, or large floor plan. In these cases, an approved vinyl flooring adhesive should be applied by trowel (not roller) to the surface between the subfloor and the **NinjaXtra** tile or plank.

STORAGE, HANDLING, CARE AND PRECAUTIONS

- NinjaXtra** floors must be **stored flat**, horizontally and stacked.
- Do not store directly on cement, allow for air circulation.
- Protect carton corners from damage.

TOOLS AND MATERIALS

- $\frac{1}{4}$ " or $\frac{1}{2}$ " Spacers
- Utility Knife with Spare Blades
- Circular, Miter, or Jig Saw
- Tape
- 25 Degree Wedge
- Rubber Mallet
- T-Square
- Vacuum
- Tape Measure
- Safety Glasses
- Vinyl Glue

NinjaXtra may be installed over most types of subfloors and existing floors and on all grade levels.

SUBFLOOR REQUIREMENTS

- All substrates must be **structurally sound** and free from movement or deflection.
- Substrates must adhere to all local building codes.
- The substrate must be clean, dry, flat and free of any surface defects.
- To support the locking system, the subfloor must be **level** within $\frac{3}{16}$ " over 10 ft.
- Smooth and level all irregularities with a hydraulic (Portland) cement based patching and leveling compound.

CONCRETE

Concrete subfloors shall be **properly cured** and allowed to dry for a minimum of 90 days prior to installation. All concrete floors should be checked

for flatness prior to installation and brought to proper specs before proceeding with installing your **NinjaXtra** floor.

WOOD

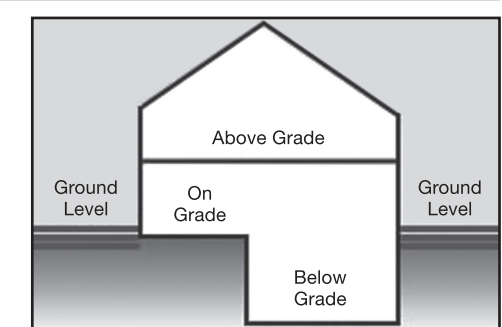
- Suspended wood subfloors shall have a minimum of 18" of well ventilated air space clearance above the underside of the joists.
- A **moisture barrier** must be installed over 100% of the crawl space with 6" overlapped joints at the widths and lengths.
- Moisture content of wood subfloor shall not exceed 12%. Test with a moisture meter.
- Wood subfloors must be structurally sound and

deflection free and constructed according to local building codes.

- Repair any squeaky floor prior to installing **NinjaXtra** floors.
- Sand or plane high spots and fill all low points with a Portland cement based patching compound. The subfloor must be flat within $\frac{3}{16}$ " over 10 feet horizontal. Use a string line stretched tight across the floor to determine flatness.

EXISTING SHEET AND TILE FLOORING

- Existing flooring must be adhered, sound and in good condition.
- Existing floating floors must be removed.
- Existing floor must not exceed a single layer above the sub-floor.
- Repair any damaged areas.
- Existing sheet vinyl, LVT may require a skim coat of Portland based leveling compound or if they are deeply embossed. Heavily cushioned vinyl floor or vinyl floor consisting of multiple layers are not suitable as a subfloor.
- Ceramic tile and terrazzo installed must meet flatness requirements. They should be made smooth by applying a cement overlay such as patching or leveling compound to smooth out surface or grout joints.



CARPETING

All carpeting and padding must be removed before laying NinjaXtra floors.

RADIANT HEAT

- NinjaXtra** floors are suitable for installation over radiant heating systems provided that the heating element is not in direct contact with the flooring.
- New hydronic systems should be running two weeks before installation to remove residual moisture.
- Establish a constant room temperature of 18-24° Celsius prior to installation.

CONDITIONING/ACCLIMATION

- Place the unopened cartons of **NinjaXtra** floors lying horizontally in the room in which they will be installed. No acclimation required.

Maintain room at 18°C to 24°C.

ROOM PREPARATION

- Remove all surface roughness or unevenness of the subfloor as they will, over time, show through the finished resilient (telegraph) and could result in small dents or cause excessive wear.
- Vacuum and remove all debris, dust and sand.
- Remove existing wall mouldings and doorway transition mouldings. The moulding must be of sufficient size to cover the $\frac{1}{4}$ " expansion area around the perimeter of the floor.
- Leave at least $\frac{1}{2}$ " between the surface of the flooring and the bottom of electric baseboard heaters to allow heat to circulate.
- Undercut door mouldings and casings to allow the flooring to fit underneath without restriction. Use a scrap piece of resilient and foam underlayment as a spacer guide.
- Sweep and/or vacuum substrate to remove all dirt and debris.
- After installation, it may be necessary to trim the bottom of any doors to allow for the change in floor height.

Do not use an additional underlayment.

Getting Started

- Determine in which direction the planks will be installed. To make the room appear larger or if installing in very small rooms or hallways, it is preferable to lay the planks parallel to the longest room dimension.
- Minimize joint shadow by running board direction parallel to the primary light source.
- Carefully measure the room to determine squareness and to determine the width of the last row of planks. If the width of the last row of planks is less than 2" excluding the tongue, cut and adjust the width of the first row of planks accordingly.

- For rooms larger than 4,000 ft², the use of T-mouldings is required to account for the normal movement or seasonal expansion/contraction of the floor.

- Do not fit this floor flush against any fixed, vertical objects (eg. walls, pipes, passageways, staircases). A minimum of $\frac{1}{4}$ " expansion space is required around the perimeter of the room as well as any fixed objects.

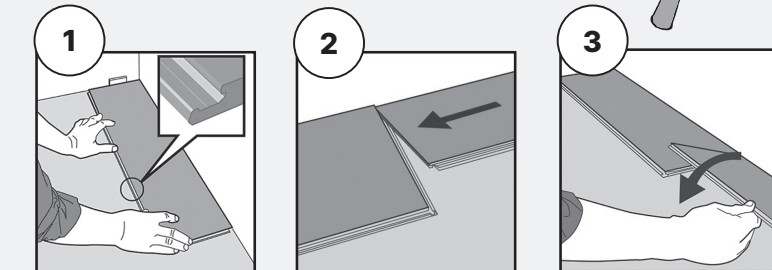
- For best appearance install floor pieces selected from several boxes to ensure blending of colour variance. Avoid installing from one box at a time.

- All floating floors require cabinets to be installed before installing **NinjaXtra** floors.

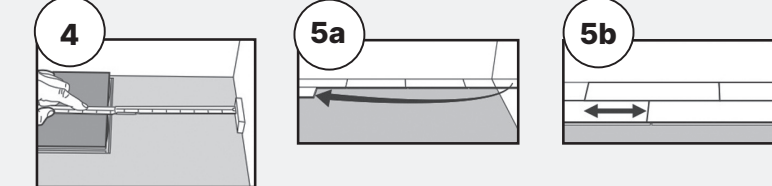
- Inspect all planks for visible defects and damage before and during installation. Do not install damaged planks. **NinjaXtra** will not accept responsibility for claims on flooring installed with obvious defects. During installation, inspect the groove area for any debris that may prevent proper assembly and locking of planks.

Installing Planks

- First plank, first row. Leave a $\frac{1}{4}$ " gap to the left and position the plank tongue-side against the wall.
- Second plank, first row. Drop this plank gently to the narrow end of the first plank.
- During the drop down, make sure the planks are tight against each other. Press or tap at the narrow end just installed. Use a rubber mallet (fig. 1) if necessary to ensure an engaged lock on the short side.

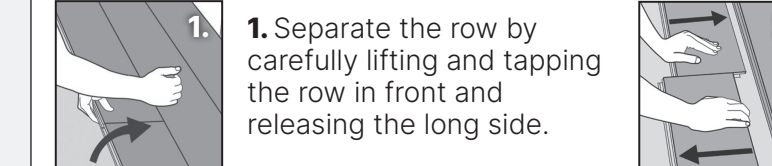


- At the end of the first row, leave a $\frac{1}{4}$ " gap, to the wall and measure the length of the last plank and cut it off.
- 5a First plank, second row. Plank should be a min. length of 20". Click in place.
- 5b Minimum distance between narrow ends of planks in parallel rows shall not be less than 16".



DISASSEMBLING (WITHOUT TOOL)

Your floor can be disassembled and reassembled if necessary.



- Separate the row by carefully lifting and tapping the row in front and releasing the long side.
- Disassemble the planks by sliding horizontally. *Do not lift to release.*

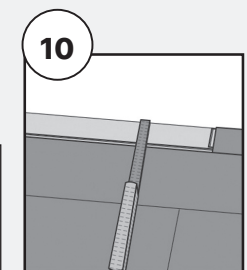
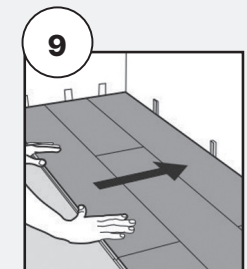
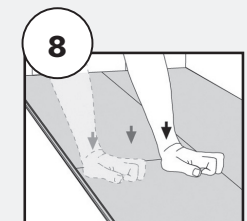
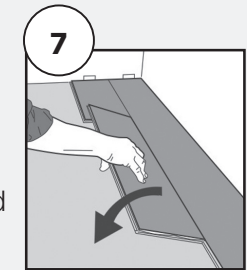
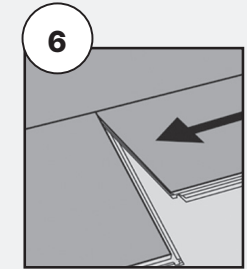
- Second plank, second row. Drop the plank gently to the narrow end of the previous plank.
- Click the plank to the narrow end of the previous panel. During the fold down, make sure the planks are tight against each other.
- Press or tap along the narrow end of the installed panel.

Do not break or bend the end joint.

- After 2-3 rows, adjust the distance to the front wall by $\frac{1}{4}$ ". Continue installing each additional row in this manner until the room is complete.

- Last row. Minimum width 2".

Remember to leave a $\frac{1}{4}$ " expansion gap. Cut the panels lengthwise and glue the short ends.



FINISHING THE INSTALLATION

- Remove spacers from the perimeter of the room.
- Install transition mouldings. Do not fasten transitions through the planks.
- Install quarter round or baseboard moulding. Moulding must be sufficient size to cover the expansion space. Do not fasten mouldings through the planks.
- Use floor protection when moving furniture or appliances to avoid damaging the floor.

AFTER THE INSTALLATION

Room climate – Humidifier or de-humidifier needed? Maintain a humidity (RH) of 45-60%. If necessary install a humidifier/dehumidifier.

MAINTENANCE AND CARE

- Do not use abrasive cleaners.
- The floor should be cleaned by using a vacuum-cleaner (attachment for wood floors) or swept. If required, wipe with a damp mop using mild soap or vinyl floor cleaner.
- NinjaXtra** Floors are waterproof, but are not guaranteed to provide a waterproofing membrane (liquids may penetrate to the space underneath the floor). Avoid pooling water on the floor. Wipe up spill liquids.
- Expansion/Contraction. Daily temperature fluctuation of more than 6 degrees will cause the floor to expand or contract. Sunshine may need to be blocked with window covering to minimize daily temperature changes.
- Scratches are site related, and are not covered by the manufacturer's warranty. Use felt pads on furniture legs.

20 YEAR RESIDENTIAL LIMITED WARRANTY

Subject to certain conditions described herewith Taiga Building Products will provide replacement flooring free of charge if there is a loss of original pattern or colour under normal residential use of **NinjaXtra** vinyl tile and plank flooring. The floor must be installed and maintained according to the installation instructions, by a professional flooring installer or the original purchaser. This warranty does not include the cost of labour for installation of the replacement floor. This warranty does not include: costs of damage due to improper installation or maintenance, alkalis in the sub-floor, or conditions arising from hydrostatic pressure, burns, tears, indentations, stains, or reduction in gloss due to normal use and/or exterior applications. All pieces should be inspected prior to installation. Defective pieces should not be installed and do not qualify for a warranty claim if they have been installed. This warranty shall not cover loss of time, inconvenience, incidental expenses included in the removal and re-installation of the affected material, and any other damages. Warranty service requires a copy of the original bill of sale, and is made through the dealer through which the purchase was made. This is a pro-rated warranty.

3 YEAR LIGHT COMMERCIAL LIMITED WARRANTY

The limited commercial warranty is specified as 'light commercial' use such as boutiques, office spaces or retail shops, and all residential warranty conditions apply, as outlined above. In light commercial applications, the floor must not be subjected to abrasive debris from cleaning product, or footwear, wheels or castors, these type of conditions are considered to be medium to heavy commercial use, and will void the warranty. Commercial jobs should be glued down. Failure to provide reasonable access to the installation area or provide requested information may result in a denial of the claim. All warranty claims must be made to the dealer, and include a copy of the original bill of sale, as well the end label from at least one of the boxes of flooring product.

Taiga Building Products
PO Box 80329
Burnaby, BC, Canada V5H 4M2
Tel: (604) 438-1471
www.taigabuilding.com

